



Inclusive Postsecondary Education

Annual Florida Post-Secondary Education Program Planning Institute

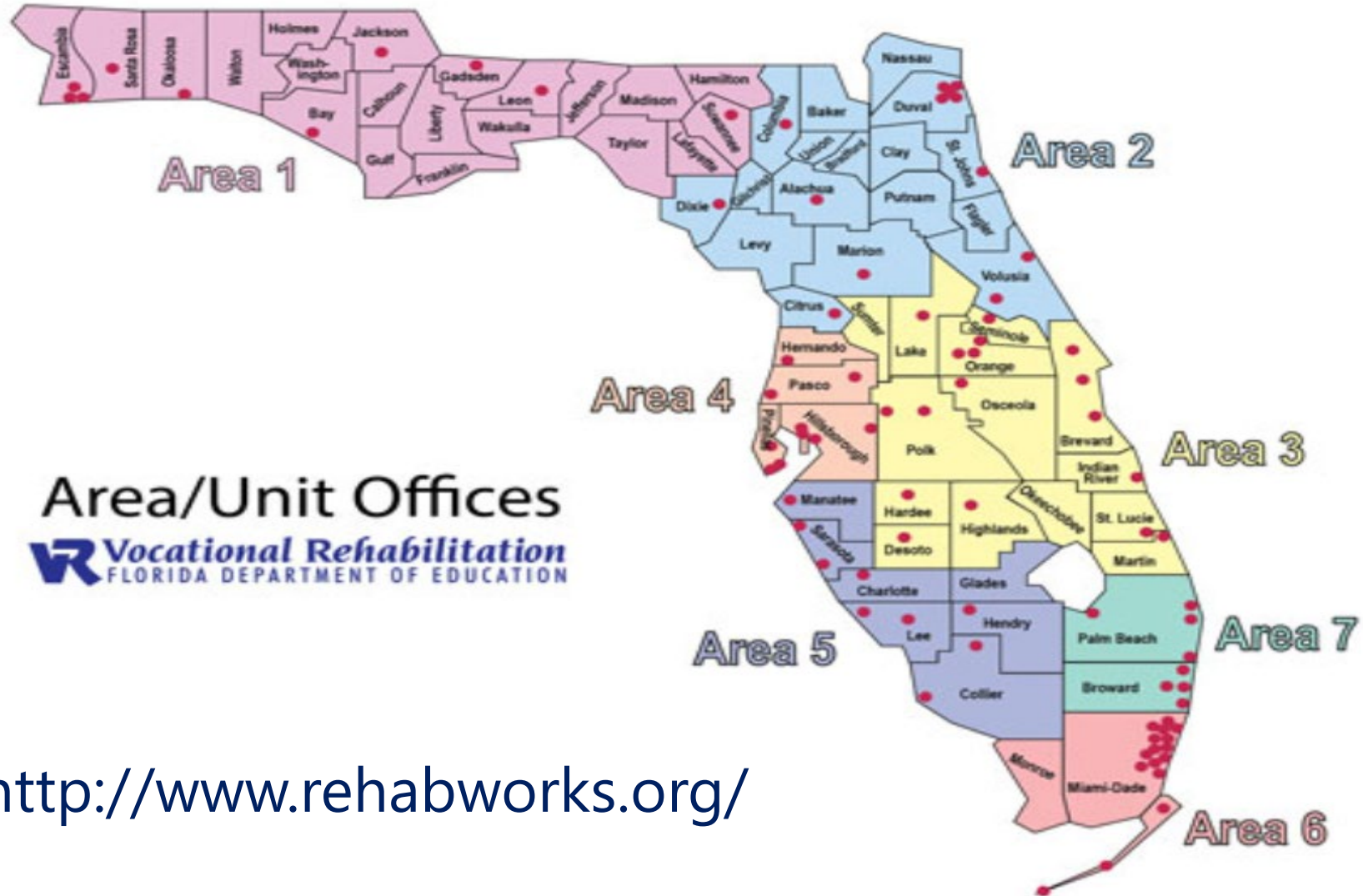
Carmen Dupont

Horace Brown

November 6-8 2019



VR OFFICE DIRECTORY



<http://www.rehabworks.org/>



Objective

- Describe the services VR can and cannot support for students attending IPSE programs
- Describe ways to maximize IPSE Program access to VR resources.

IPSE Relation to VR

- Fair and equitable access to Institutions of Higher Education from which students with the most significant disabilities are often excluded.
- Support the personal growth and development of “all” the skills needed to become employed
- Education/training is one of the most effective ways to eliminate barriers to employment
- Adequate vocational guidance and counseling is often missing from postsecondary decisions



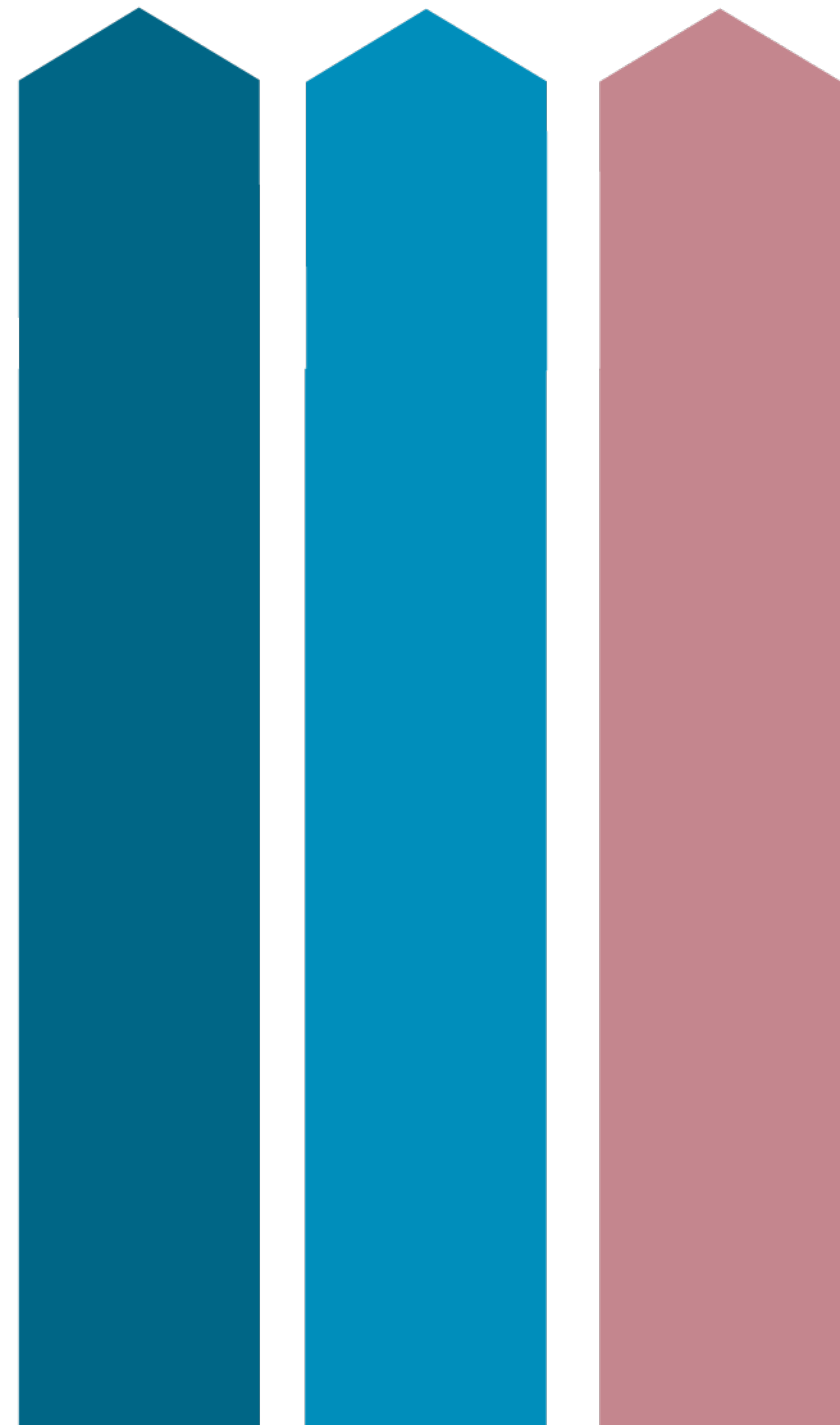
Department of Education and VR

- VR services do not remove, reduce, or change the school district's responsibility to deliver a Free and Appropriate Public Education for students served under the auspices of the Individuals with Disabilities Education Act.
- VR services will *supplement*, but will not *supplant* services delivered through the school districts.



Where does the VR discussion start?

- Student must be an eligible VR Customer to receive Vocational Training service.
- Informed Choice
- The Development of the Individualized Plan for Employment (IPE)
- Career Index Plus
- Service must be mutually agreed upon by the VR participant and VR Counselor.



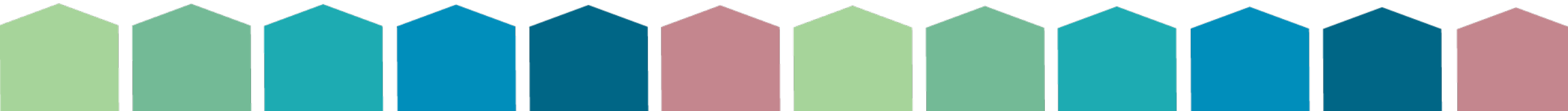
Public, Private, Technical and Community Colleges

Public

- Most Florida Public Colleges and Universities are current vendors of Vocational Rehabilitation.
- Community Colleges/ Technical. It is recommended that the first two years of college training be provided at the technical or community college level.

Private

- If an out-of-state or private institution is used on the basis of individual preference, costs shall be paid by DVR at the same rate as that for a Florida public institution with the individual being responsible for paying any cost differences.



Financial Participation

- The financial need of individuals will be considered for determining their participation in the cost of vocational rehabilitation services. The financial participation of an individual is determined by the prior year's tax return. All individuals who participate in their vocational rehabilitation services must have a completed the Financial Participation Assessment form.



FINANCIAL PARTICIPATION

TABLE A – EXCLUSION TABLE

Based on 285% above the 2019 Federal Health and Human Services Poverty Guidelines, rounded to the nearest whole dollar.

<u>Family Size</u>	<u>Income Exclusion Allowance</u>
1	\$35,597
2	48,194
3	60,791
4	73,388
5	85,985
6	98,582

For each additional person, add: \$12,597

TABLE B – PARTICIPATION TABLE

(Percentage of financial participation in the cost of non-exempt services, based on income after exclusion allowance)

<u>Income After Exclusion Allowance</u>	<u>% of Participation</u>
\$ 100 - \$ 1,999	10%
2,000 - 3,999	15%
4,000 - 5,999	20%
6,000 - 8,499	25%
8,500 - 10,999	30%
11,000 - 13,999	35%
14,000 - 16,999	40%
17,000 - 19,999	50%
20,000 - 24,999	60%
25,000 - 29,999	70%
30,000 - and above	80%

Financial Participation

EXAMPLE – FINANCIAL PARTICIPATION ASSESSMENT *(Based on Cost of Non-Exempt Services of \$4,000)*

Income	Family Size	Individual Contribution
\$80,000	4	\$ 1,000 (25%)
\$58,560	2	1,400 (35%)
\$32,340	1	0 (0%)

For Example:

Mr. Smith earned **\$80,000** and has a family size of **4**. His **income exclusion allowance**, according to **TABLE A**, is **\$ 73,388**. Subtract that from **\$80,000**. The result is **\$6,612**, which is his **income after exclusion allowance**.

According to **TABLE B**, this amount of income after exclusion allowance (**\$6,612**) indicates his percentage of participation is **25%**. If his **planned cost of non-exempt services** are **\$4,000**, his percentage of that is **25%**. Therefore, multiply **.25** by **4,000**. This will result in **\$1,000** of financial participation. This is the amount Mr. Smith would **contribute** to his services.

Mr. Smith's Earnings	\$ 80,000.00
Subtract TABLE A Amount based on family size of 4	<u>-73,388.00</u>
Applicable Income	\$ 6,612.00
TABLE B - Percentage of Participation based on the Applicable Income	25%
Estimated Planned Non-Exempt Service Cost	\$ 4,000.00
25% of Planned Non-Exempt Service Cost	<u>X .25</u>
Individual's Financial Participation	\$ 1,000.00




Approved Authorized VR Services

Exempt Services

- Guidance and Counseling
- On-the-job training
- Pre-Employment Transition Services
- Supported Employment Services
- Job Search and Placement Services

Non-Exempt

- Tuition, books & supplies
 - Maintenance (housing) May be approved if required
 - Assistive devices and technology
 - Transportation
 - Employer required uniforms and work supplies
 - Needed IPSE background checks/screenings
- 

Contact Us

Horace Brown,
VR Program Administrator
[Email: Horace.Brown@vr.fldoe.org](mailto:Horace.Brown@vr.fldoe.org)
Phone: 850-245-3360

Carmen Dupoint
VR Employment Programs Supervisor
[Email: Carmen.Dupoint@vr.fldoe.org](mailto:Carmen.Dupoint@vr.fldoe.org)
Phone: 850- 245-3299

Florida's Cost of Attendance Resource

- <https://www.flbog.edu/universities/parents-students/tuition-fees/>

