

Florida Center for Students with
UNIQUE ABILITIES

Welcome to the Team Leader Webinar!

Preparing for the 2018
Florida Postsecondary Education
Program Planning Institute

Today's Hosts

- ▶ Florida Center for Students with Unique Abilities (FCSUA) at the University of Central Florida
 - Paula Kohler, Ph.D.
 - Drew Andrews, Ed.D.
 - Caitlyn Bukaty, Ph.D.
- ▶ Western Michigan University
 - Jennifer Coyle, Ed.D.

Today's Agenda

- ▶ Overview of FCSUA and Florida Postsecondary Comprehensive Transition Programs (FPCTP)
- ▶ Overview of the Program Planning Institute
- ▶ Overview of the Program Planning tool
- ▶ Preparing for the Program Planning Institute
- ▶ Questions

Florida's Opportunity

- ▶ The Florida Postsecondary Comprehensive Transition Program Act (FS 1004.6495)
- ▶ Signed into law January 21, 2016

The FPCTP Act

- ▶ Established the Florida Center for Students with Unique Abilities
- ▶ Established Florida Postsecondary Comprehensive Transition Programs (FPCTP)
- ▶ Funds scholarships for students to attend approved programs
- ▶ Funds start-up and enhancement grants

FCSUA's Charge

- ▶ Disseminate information to stakeholders, particularly students and their families
- ▶ Develop and implement an application, submission, and approval process for becoming a FPCTP
- ▶ Administer start-up and enhancement grants
- ▶ Collect, analyze, and report evaluation information regarding program and student outcomes

Eligible Postsecondary Institutions

- ▶ State university
- ▶ Florida College System institution
- ▶ Career technical center
- ▶ Charter technical career center
- ▶ An independent college or university that is located and chartered in this state, is not for profit, is accredited by the Commission on Colleges of the Southern Association of Colleges and Schools, and is eligible to participate in the William L. Boyd, IV, Florida Resident Access Grant Program.

Eligible Students

- ▶ Be a "student with an intellectual disability" as that term is defined in 20 U.S.C. s. 1140(2), including, but not limited to, a transitional student (age 18 - 26)
- ▶ Physically attend the eligible institution
- ▶ Submit documentation regarding his or her intellectual disability

FPCT Programs

- ▶ Focus on employment outcomes
- ▶ Inclusive contexts
- ▶ No less than half-time enrollment
- ▶ Meaningful credential, industry certification
- ▶ Requires definition of *satisfactory academic performance*
- ▶ Requires federal comprehensive transition program application

FPCTP Scholarships

- ▶ Scholarships available for eligible students attending the approved FPCTPs
- ▶ 56 scholarships @ \$7,000 annually awarded 2017-18 to date

FPCTP Grants

- ▶ Start-up
 - Establish a new program
- ▶ Enhancement
 - Add FPCTP “standards” to an existing program
 - Expand or improve an approved FPCTP

The FCSUA Provides

- ▶ Assistance to prepare FPCTP applications and grant proposals, and to request scholarships
- ▶ Assistance to design evaluation plans, and to collect and analyze evaluation data
- ▶ Assistance to develop the Federal CTP proposal
- ▶ Feedback to the State legislators re: funding and policy needs

Why an Institute?

- ▶ Foster development of FPCTPs
- ▶ Provide information regarding resources
- ▶ Provide information regarding program strategies
- ▶ Facilitate planning new and enhancing existing programs
- ▶ Foster collaboration across the state

The Institute Model



Institute Format

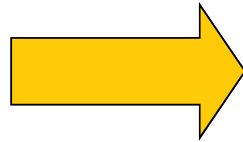
- ▶ Hybrid “Institute and Conference” model
- ▶ Combines elements of a conference with elements of an institute
- ▶ Provides a format for learning and applying that learning to the postsecondary education program context

Institute Components

Build and/or
Strengthen
Postsecondary
Education
Programs



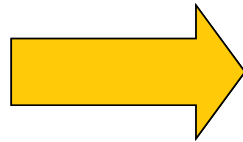
Content sessions



Facilitated team
planning meetings



Content resources

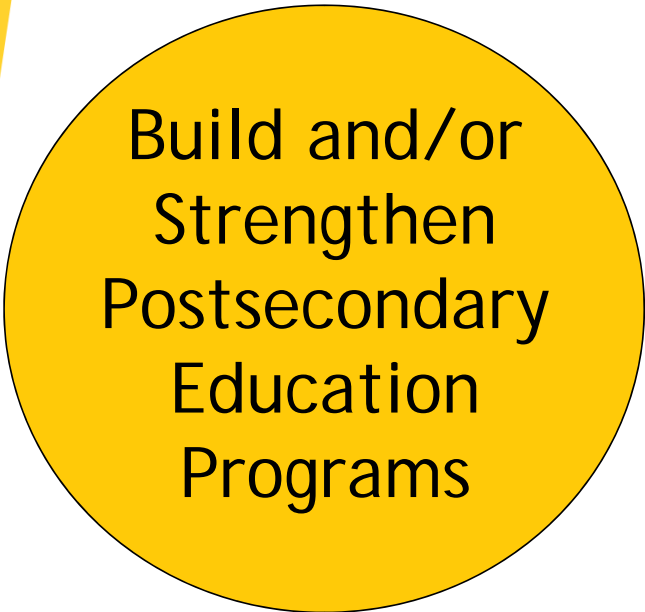


Postsecondary education
program planning tool

Content Sessions

- ▶ Keynotes
- ▶ Three rounds of content sessions (6 presentations each round)
- ▶ Experts from the field
- ▶ FPCTP guidance

Institute Components



Build and/or
Strengthen
Postsecondary
Education
Programs



Content sessions



Facilitated team
planning meetings



Content resources



Postsecondary education
program planning tool

Facilitated Team Planning Meetings

- ▶ Dedicated planning time with a facilitator
- ▶ Postsecondary education program planning tool
- ▶ Content resource visits
- ▶ Content session debriefs
- ▶ Prepare for team report out

Institute Components

Build and/or
Strengthen
Postsecondary
Education
Programs



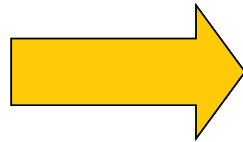
Content sessions



Facilitated team
planning meetings



Content resources

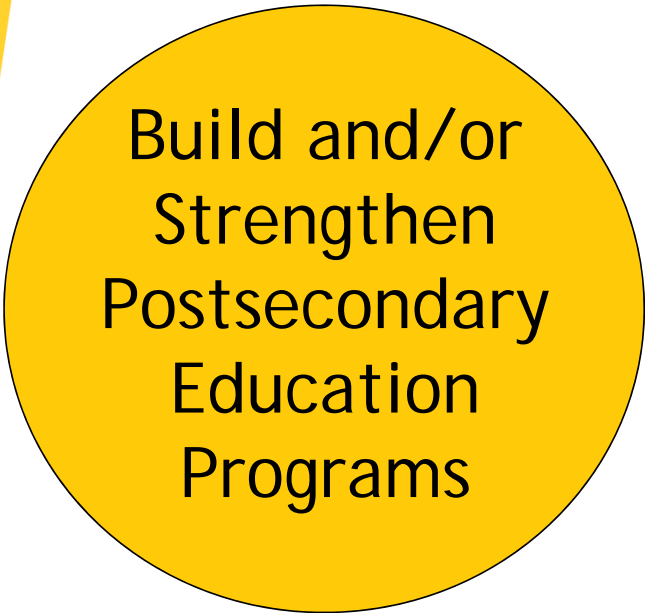


Postsecondary education
program planning tool

Content Resources

- ▶ Experts from the field
- ▶ Available during 2nd and 3rd team planning meetings
- ▶ 20 minutes to ask questions and “pick their brains”

Institute Components



Build and/or
Strengthen
Postsecondary
Education
Programs



Content sessions



Facilitated team
planning meetings



Content resources

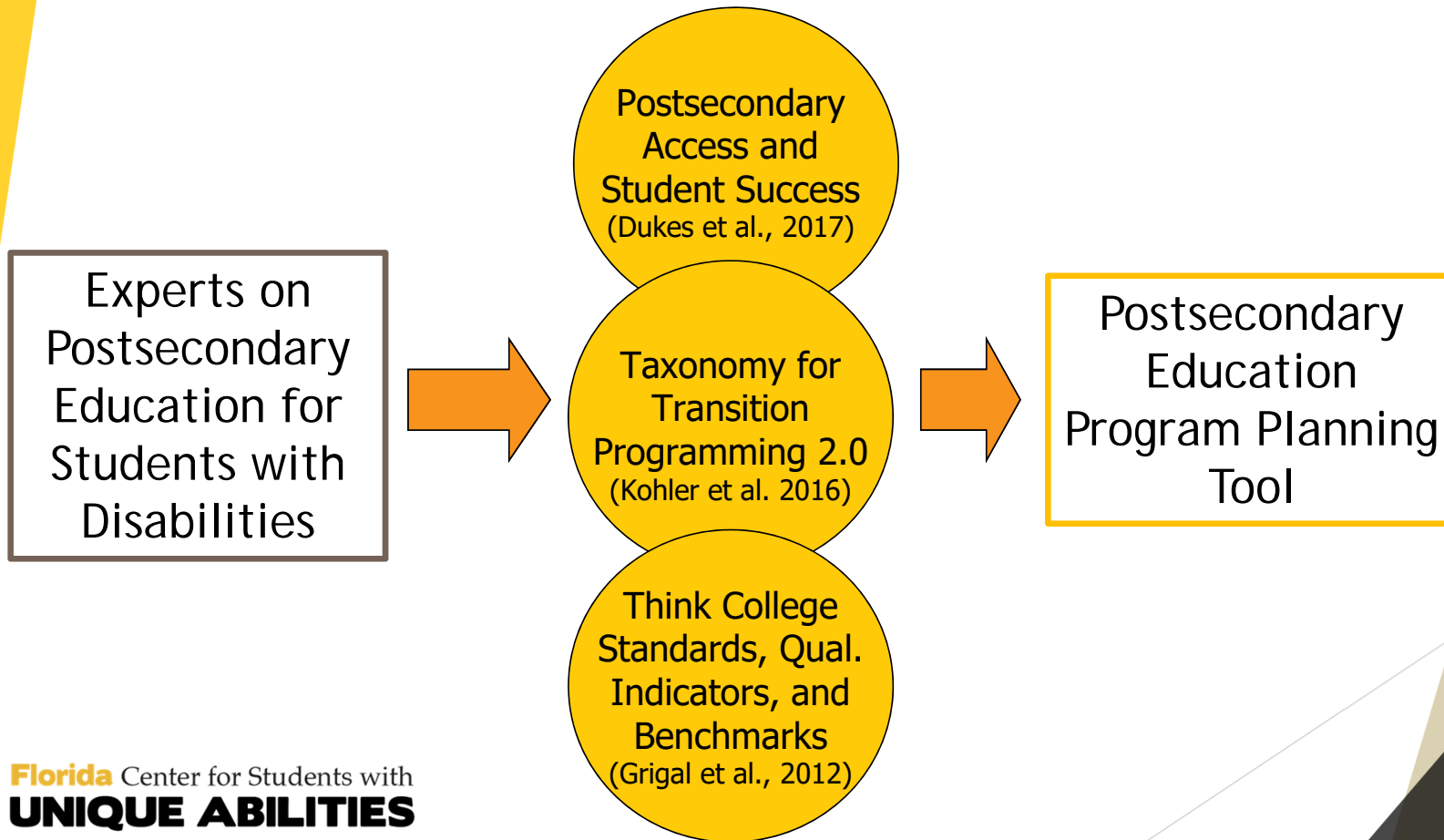


Postsecondary
education program
planning tool

Program Planning Tool

- ▶ Paper and Word document on USB drive
- ▶ Provides a context for team discussions
- ▶ Assists teams to “leave” with concrete ideas

Program Planning Tool: Development



Program Planning Tool

- ▶ Four domains
 - Student-Focused
 - Faculty and Staff-Focused
 - Program and Institutional-Focused
 - Concept and System Development

Program Planning Process: Step 1

- ▶ Building the team
 - Team lead
 - Other team members
 - Facilitator

Potential Team Members

- ▶ Postsecondary education institution faculty and staff
- ▶ Special populations coordinators
- ▶ State or local service agencies or organizations
- ▶ K-12 transition specialists
- ▶ Other K-12 educators
- ▶ Parents
- ▶ Students
- ▶ Other relevant stakeholders

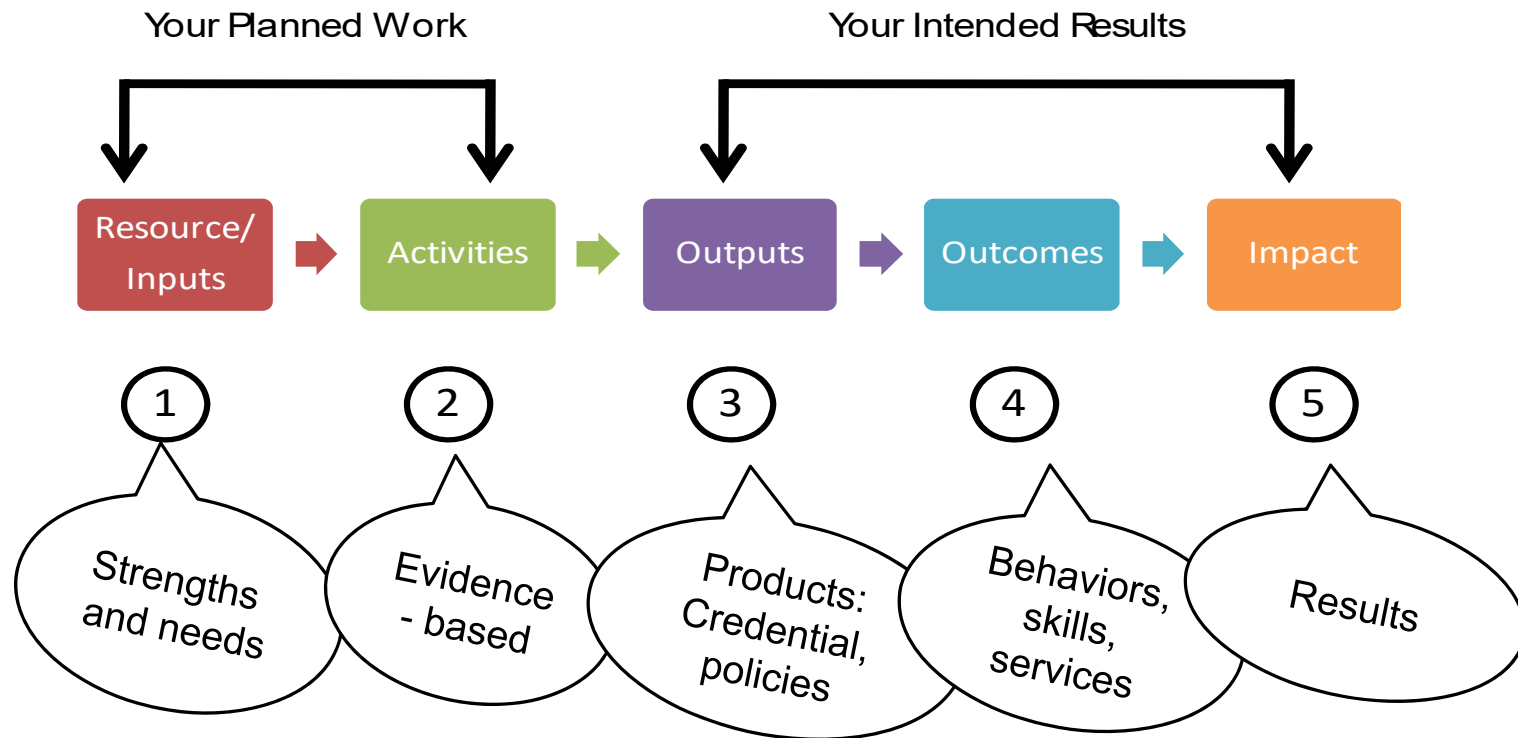
Program Planning Process: Step 2

- ▶ Needs assessment
 - Domains
 - ▲ Benchmarks
 - ▲ Reflective questions
 - ▲ Implementation scale
 - ▲ Evidence of implementation scale
 - ▲ Strengths
 - ▲ Needs
 - ▲ Priority

Program Planning Process: Step 3

- ▶ Goals
 - Strategies
 - Tasks
 - People
 - Timeline
 - Outputs
 - Outcomes, indicators, and data sources

Logic Model Components



This Year's Program Planning Institute

- ▶ Registration and check-in
 - Wednesday, January 24, 8:30 a.m. - 6:00 p.m.
 - Thursday, January 25, 7:30 a.m. - 6:00 p.m.
- ▶ Institute kickoff
 - Wednesday, January 24, 3:30 p.m.
- ▶ Welcome reception and poster session
 - Wednesday, January 24, 5:30 - 7:00 p.m.
- ▶ Team report out and resource information
 - Friday, January 25, 1:15 - 2:30 p.m.

Team Meeting Schedule

- ▶ Thursday, January 25
 - Team Session 1: 10:00 - 11:45 a.m. (followed by lunch)
 - Team Session 2: 2:30 - 4:30 p.m.
- ▶ Friday, January 26
 - Team Session 3: 9:45 a.m. - 12:00 p.m.

What Makes for Success?

- ▶ A well prepared team
- ▶ Access to data
- ▶ Ready to “hit the Institute running!”
- ▶ Having a facilitator

Preparing Your Team

- ▶ Build a team that includes key personnel
- ▶ Communicate with your team before the Institute
- ▶ Think about and identify team member roles, if you haven't already
 - Team leader
 - Notetaker

Data to Inform Program Planning

- ▶ Review of catchment area statistics - what's your target?
- ▶ SPP/APR Indicator 1, 2, 13, & 14 data
- ▶ FLDOE LEA profile report
- ▶ Existing program data [e.g., enrollment, satisfactory academic progress (SAP), etc.]
- ▶ VR client and service information
- ▶ Data from other organizations who are part of your team
- ▶ Knowledge of IHE and K - 12 policies and procedures
- ▶ Other relevant data

Onsite Planning Process

- ▶ Facilitator leads discussion, with flip charts
- ▶ Team makes notes on paper planning copies
- ▶ Note taker documents information from team discussion in Word or on paper tool
 - Description of what's happening now
 - Summary of strengths and needs
 - Development/improvement plan details

What Else to Bring?

- ▶ Laptop
- ▶ LCD projector to project team planning tool
- ▶ Extension cord
- ▶ Additional USB drives
- ▶ Snacks or treats

To Do ASAP

- ▶ Verify team members and registration with Drew
- ▶ Check hotel reservation list
- ▶ Identify for whom FCSUA will be covering travel costs
- ▶ Ask questions!

Travel Reimbursement

- ▶ FCSUA will reimburse eligible institutions for travel expenses of 50% of the institution's team members.
- ▶ If your institution's team includes 8 participants, the FCSUA will reimburse the travel expenses for 4 of those members; up to a total of 5 members whose travel the Center will cover.
- ▶ Teams from institutions with FPCTP grants are required to attend and may use grant funds to cover their 50% of participant travel costs, in line with their approved grant budget.

And.....

- ▶ Pack comfy shoes and layers for the chilly or the warm room
- ▶ Bring your questions!
- ▶ Come with an open mind
- ▶ Use networking opportunities to learn more about other programs or gain new ideas
- ▶ Be ready to work hard!
- ▶ Have FUN!

Questions



Florida Center for Students with
UNIQUE ABILITIES



Thank You - See You in Lake Buena Vista!

- ▶ Drew Andrews – team and/or program questions
 - drew.andrews@ucf.edu
 - Office: 407-823-6115
 - Cell/Text: 352-316-4646
- ▶ Eric Brewington – travel questions
 - Eric.brewington@ucf.edu
 - Office: 407-823-5225
- ▶ www.fcsua.org or fcsua@ucf.edu