

Florida Center for Students with
UNIQUE ABILITIES

2020 Virtual Florida Postsecondary Education Program Planning Institute: Overview



Today's Agenda

- ▶ Overview of the 2020 *Virtual* Florida Postsecondary Education Program Planning Institute (FLPEPPI)
- ▶ Overview of the Online Strategic Planning Tool
- ▶ Our virtual platform, Whova
- ▶ Preparing for the Virtual FLPEPPI
- ▶ Questions

Virtual FLPEPPI Purpose

- ▶ Increase and/or expand Florida Postsecondary Comprehensive Transition Programs (FPCTPs) across the State, in all types of postsecondary education institutions: **universities, state and community colleges, and career tech centers.**

Why FLPEPPI?

- ▶ Facilitate planning and implementation of FPCTPs
- ▶ Update or develop postsecondary education program plans, using the program planning tool
- ▶ Increase understanding of resources available
- ▶ Develop new partnerships via networking with other sites
- ▶ Have fun!

Virtual FLPEPPI Focus

- ▶ FPCTP Students' Success
- ▶ Collaboration between like institutions
- ▶ Team planning and report out
- ▶ Supporting existing and new teams

FPCT Programs

- ▶ Focus on employment outcomes
- ▶ Inclusive contexts
- ▶ No less than half-time enrollment
- ▶ Meaningful credential, industry certification
- ▶ Requires definition of *satisfactory academic progress*
- ▶ Requires federal Comprehensive Transition and Postsecondary (CTP) program application

Eligible Students

- ▶ Be a "student with an intellectual disability" as that term is defined in 20 U.S.C. s. 1140(2), including, but not limited to, a transitional student (age 18 - 26)
- ▶ Physically attend the eligible institution
- ▶ Submit documentation regarding his or her intellectual disability

The Institute Model



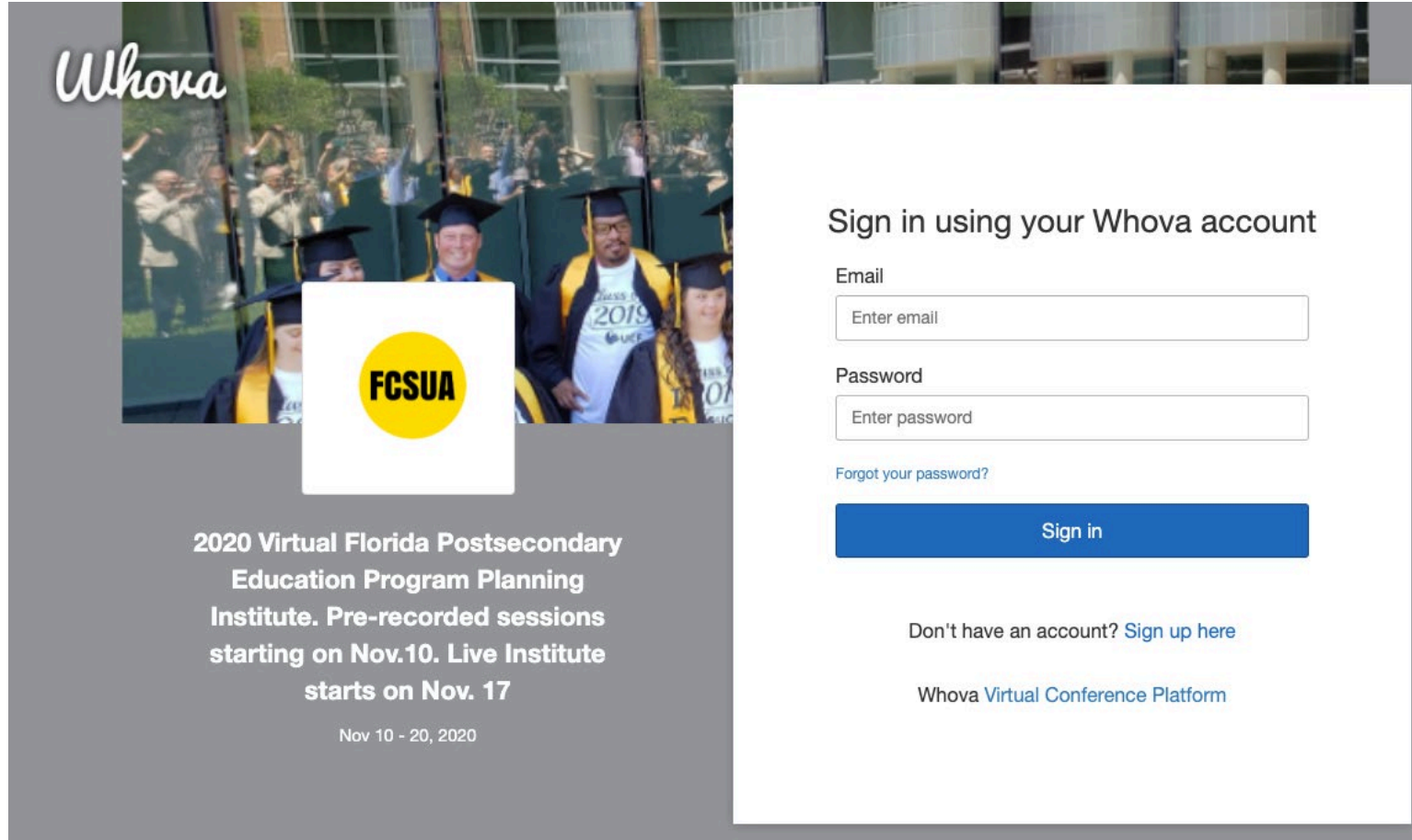
Institute Format

- ▶ Hybrid “Institute and Conference” model
- ▶ Combines elements of a conference with elements of an institute
- ▶ Provides a format for learning and applying that learning to the postsecondary education program context

Virtual Institute Format

- ▶ Pre-recorded and Live presentations
- ▶ Six hours of facilitated team planning time via Zoom
- ▶ WHOVA platform (whova.com) for institute

Whova



The image shows a Whova login interface. On the left, there is a background image of graduates in caps and gowns, with a white box containing a yellow circle with the text "FCSUA". The Whova logo is in the top left corner. On the right, there is a white login form with the following elements:

Sign in using your Whova account

Email

Password

[Forgot your password?](#)

[Sign in](#)

Don't have an account? [Sign up here](#)

[Whova Virtual Conference Platform](#)

Institute Components

Build and/or
Strengthen
Postsecondary
Education
Programs



Content sessions



Facilitated team
planning meetings



Content resources



Postsecondary
education program
planning tool

Content sessions

- ▶ Pre-recorded webinars
- ▶ Institute agenda
 - Keynote
 - General sessions
 - Type-alike session
 - Breakout sessions
 - Team report out

Facilitated Team Planning Meetings

- ▶ Dedicated planning time with a facilitator
- ▶ Postsecondary education program component
--Strategic Planning Tool
- ▶ Content resource visits
- ▶ Content session debriefs
- ▶ Prepare for team report out

Facilitated Virtual team meetings*

- ▶ Ground rules
- ▶ Parking lot
- ▶ Zoom Chat
- ▶ Notes



Ground Rules*

- ▶ Please stay muted
- ▶ Use chat or raise your hand option if you have a question
- ▶ Use chat for “parking lot” questions

Team Planning Meeting Options

- ▶ Tuesday, November 17
 - 1:30 - 4:30 p.m.
- ▶ Wednesday, November 18
 - 8:00 - 10:00 a.m. and 12:30 - 4:30 p.m.
- ▶ Thursday, November 19
 - 8:00 - 10:00 a.m. and 12:30 - 4:30 p.m.
- ▶ Friday, November 20
 - 8:00 - 10:00 a.m. and 12:30 - 4:30 p.m. (optional)

Team Planning Meetings: Scheduling

- ▶ Team leader and facilitator decide when the team will meet for a total of six hours by November 10
- ▶ All team members and DREW will receive a calendar invite with decided times and Team Planning Zoom link

Content Resources

Experts from the field

- ▶ 30 min slots
 - Aim for 20 minutes of discussion
 - Identify 1-2 targeted questions for a deeper dive into content expertise
 - Extra time allotted for logging on and off
 - Facilitator will keep time for your content resource, so they can get to their next engagement on time

Content resources

- ▶ You are encouraged to watch prerecorded content resource videos in the Exhibitor Hall
 - FPCTP Planning Tool Crosswalk—A MUST See!!!
- ▶ Facilitators will send a chat to Janice to request a content resource
 - Name of content resource request, including a topic or question
 - Desired time slot(s) - 2 choices
 - Team planning Zoom link

Content resources

- Available times
 - ▲ Wednesday: 8:00 - 10:00 a.m./12:30 - 4:30 p.m.
 - ▲ Thursday: 8:00 - 10:00 a.m./12:30 - 4:30 p.m.
 - ▲ Friday: 8:00 - 10:00 a.m./12:30 - 4:30 p.m.
- Janice will send facilitator a confirmation chat of content resource, time and day
- Please do not send a request to the content person directly! Team members can pose a question to content resource via Whova.

Florida Center for Students with
UNIQUE ABILITIES


Questions?

Online Strategic Planning

- ▶ Moves the “science” into practice
- ▶ Provides a context for team discussions
- ▶ Assists teams to “leave” with concrete ideas

transitionprogramtool.org

SELECT PLANNING FOCUS





NTACT
National Technical Assistance Center on Transition

Strategic Planning Tool

Welcome to our web-based system for building capacity and developing programs to provide K-12 transition education and services and inclusive postsecondary education.

To log in, select a planning focus below:



K-12 Education

Postsecondary Education

For more information about this tool please contact ntactsupport@ucf.edu

Our Strategic Planning Process

- ▶ Integrates available evidence-based and promising practices into a step-by-step planning process
- ▶ Designed for TEAMS!
- ▶ IHE teams planning FPCTPs have a site in the system

System Framework

- ▶ Dashboard
- ▶ Overview
- ▶ Assessment and Planning
 - Assess your current status and ID needs
 - Make a plan to address needs
- ▶ Reporting
 - Progress reports
 - Year-end report

Content Embedded in the System

- ▶ Four domains of EBPPs
 - Student-Focused
 - Faculty and Staff-Focused
 - Program and Institution-Focused
 - Concept and Systems Development
- ▶ Key benchmarks within each domain

Content Embedded - Assessment

- ▶ Instructions
- ▶ Reflective questions
- ▶ Sample indicators
- ▶ Information from previous years' sites

Content Embedded - Planning

- ▶ Instructions
- ▶ Example goals
- ▶ Example strategies
- ▶ Example outputs
- ▶ Example outcomes
- ▶ Example indicators
- ▶ Example data sources
- ▶ Information from previous years' sites

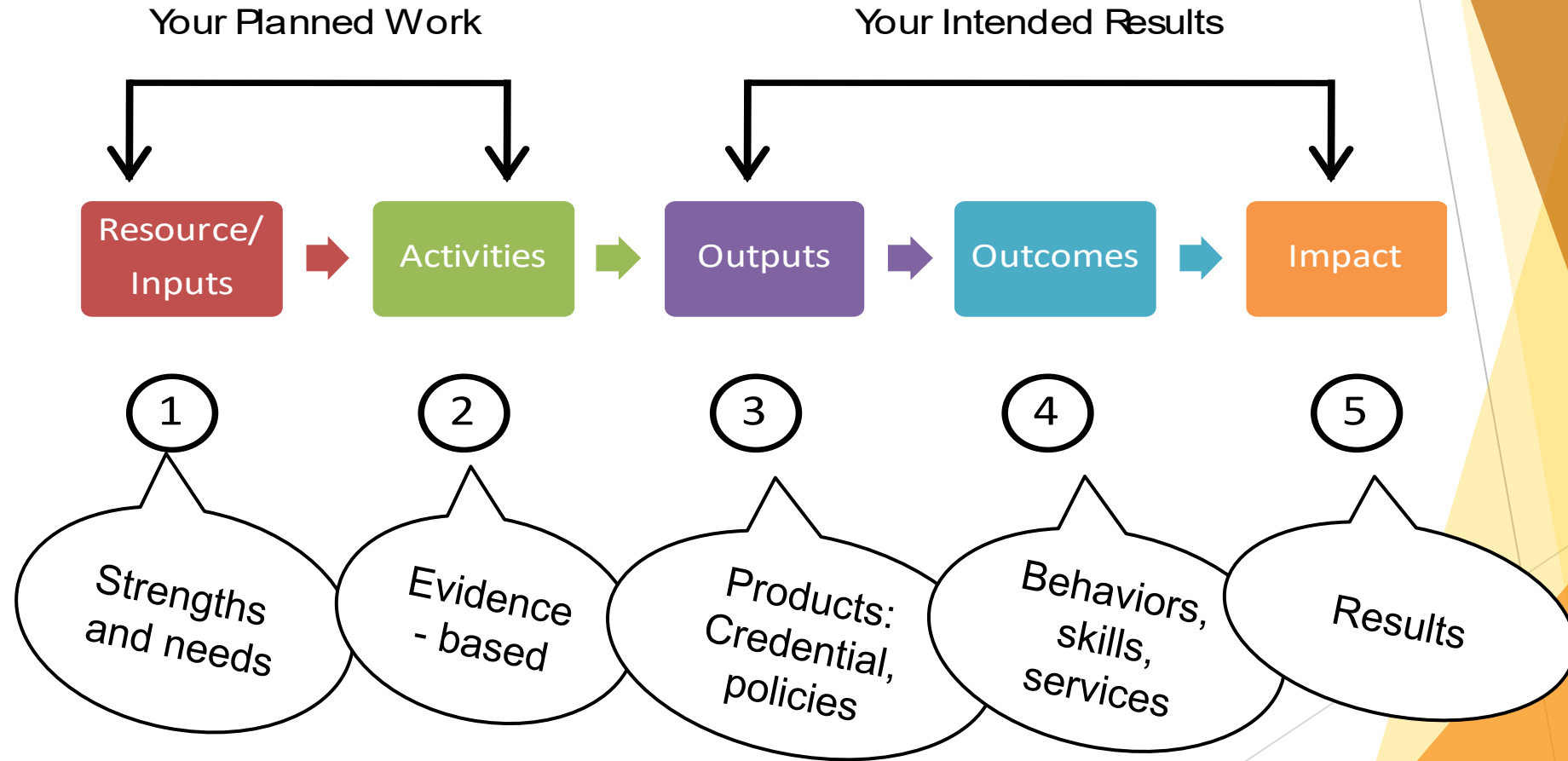
Special Features

- ▶ Upload links
- ▶ Upload documents
- ▶ Download PDF files
 - Plans
 - Reports
- ▶ Download Excel data files
 - Assessment data
 - Plan data

During the FLPEPPI

- ▶ Gather your team
- ▶ Review the domains and benchmarks
- ▶ Select a starting point
- ▶ Pull your data together
- ▶ Have meaningful discussions regarding specific benchmarks
- ▶ Put together at least one sound plan

Logic Model Components



Fundamental Questions


- ✓ What are we doing now?
- ✓ How well are we doing it?
- ✓ What do we need to do?
- ✓ What will we do?
- ✓ How will we measure our progress?

Questions?



transitionprogramtool.org

SELECT PLANNING FOCUS




NTACT
National Technical Assistance Center on Transition


Strategic Planning Tool

Welcome to our web-based system for building capacity and developing programs to provide K-12 transition education and services and inclusive postsecondary education.

To log in, select a planning focus below:



K-12 Education



Postsecondary Education

For more information about this tool please contact ntactsupport@ucf.edu

Data to Inform Program Planning

- ▶ Review of catchment area statistics - what's your target?
- ▶ SPP/APR Indicator 1, 2, 13, & 14 data
- ▶ FLDOE LEA profile report
- ▶ Existing program data [e.g., enrollment, satisfactory academic progress (SAP), etc.]
- ▶ VR client and service information
- ▶ Data from other organizations who are part of your team
- ▶ Evaluation data
- ▶ Other relevant data

What Makes for Success?

- ▶ A well prepared team
- ▶ Access to data
- ▶ Ready to “hit the Institute running!”
- ▶ Having a facilitator

Florida Center for Students with
UNIQUE ABILITIES

Questions?

Preparing for the FLPEPPI

- ▶ Check-in to Whova
 - Update your profile
 - Explore the resources
 - Create your agenda
- ▶ Log in to your team's planning site

Preparing for the FLPEPPI (cont'd)

- ▶ Come together to “wrap up” your previous work and summarize progress
- ▶ Use the features on your planning site:
 - Upload documents, data
 - Add links to information, data
 - Develop a summary report so you can build on your work

Fundamental Questions

- ✓ What are we doing now?
- ✓ How well are we doing it?
- ✓ What do we need to do?
- ✓ What will we do?
- ✓ How will we measure our progress?

To Do ASAP

- ▶ Make sure are registered and checked-into Whova
- ▶ Make sure you know team planning times
- ▶ Make sure you can access Whova before November 17th
- ▶ Make sure you can access the Strategic Planning Tool
- ▶ Make sure you have the Zoom link for your team's meeting time
- ▶ Ask questions!

And.....

- ▶ Bring your questions!
- ▶ Come with an open mind!
- ▶ Use networking opportunities to learn more about other programs or gain new ideas.
- ▶ Be ready to work hard!
- ▶ Have FUN!

Questions



Thank You -Together is Better!

- ▶ Janice Seabrooks-Blackmore– program, Planning Tool, and team questions
 - janice.seabrooks-blackmore@ucf.edu
 - Cell/Text: 904-891-4573
- ▶ Drew Andrews – team questions
 - drew.andrews@ucf.edu
 - Cell/Text: 352-316-4646
- ▶ Claudia Bello Punto—Planning Tool and Whova questions
 - Claudia.BelloPunto@ucf.edu
- ▶ www.fcsua.org or fcsua@ucf.edu